

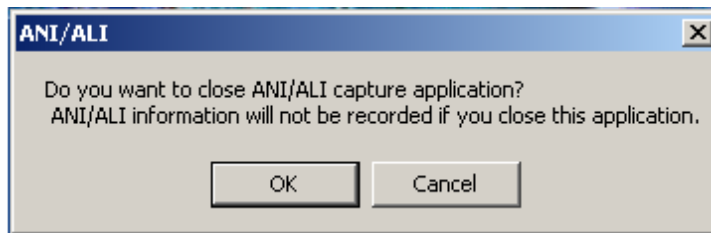
SETTING UP ANI/ALI

A serial feed is required from the 911 equipment to provide ANI/ALI to our REVCORD Voice Logger. You will need to get with your local 911 personnel that provide the equipment to coordinate with you on the hook up.

After you have installed the Version 3.2 software on your system you will notice a few added icons in the Toolbar at the bottom of your screen. You will have an ANI/ALI icon in the start up (lower right corner of screen) and you will have an ANI/ALI Capture bar on the Toolbar.



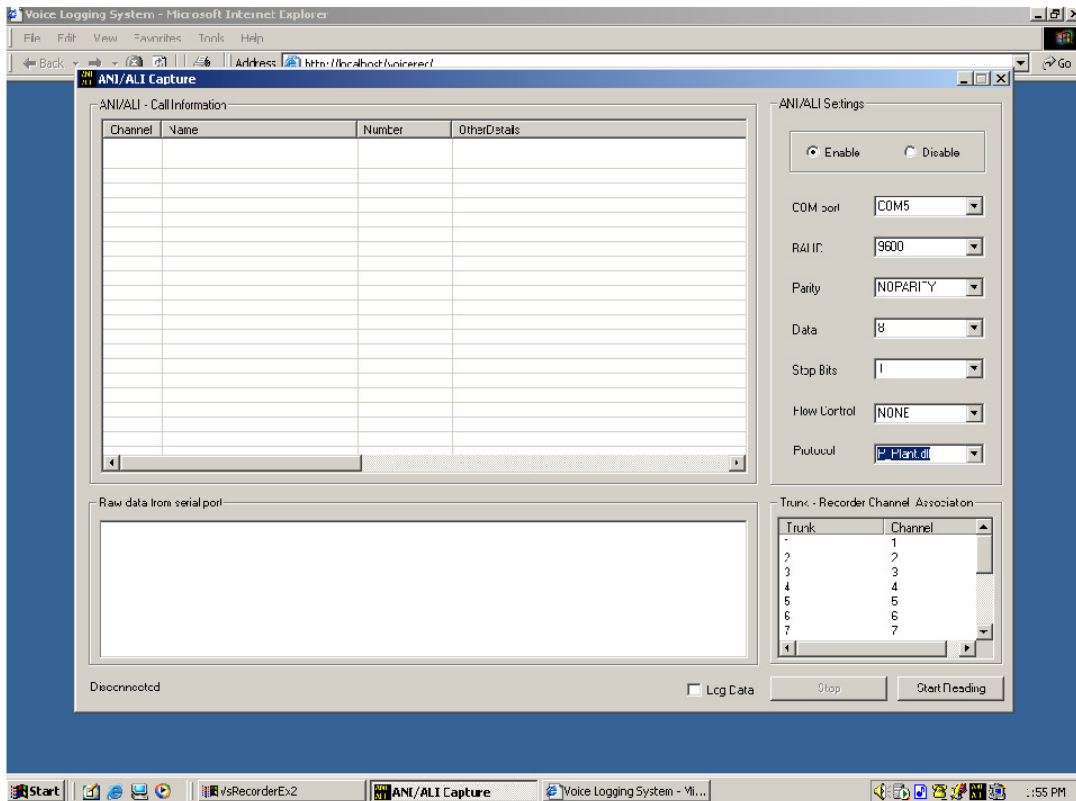
The black icon in start menu is directly related to the box in the Toolbar. When you right click on the ANI/ALI Capture bar and try to close it you will receive this message.



The only time I would recommend closing it is when you are shutting down the logger software. This will speed up the shutting down of the logger.

To configure the COM port for the ANI/ALI you click on the **ANI/ALI CAPTURE** bar. This will bring up the capture screen and over on the right hand side of the screen you will see the settings for the COM port. Click on **Enable** to change settings. Normally on our system you will be using COM 1 but this can vary depending on the peripherals that may be attached to the Logger.

At the bottom of the settings list is PROTOCOL. Use the drop down box to select which system you are connecting to. You have the option of PLANT, POSITRON, or ZTRON.



Down in the lower right corner of the screen is the **“Trunk-Recorder Channel Association”** window. Each channel that a 911 line is hooked to needs to be associated with the Trunk that it is coming in on. The 911 technician can provide this information for you.