

Printing Archive Media Labels on the REVCORD Voice Logger

If you have the need to print labels for your back up media then you will be happy to know that it is available on all REVCORD Voice Loggers.

To print a label you will need to go into the NetBackup Server. You can get there by double clicking on the Icon in the task bar, in the lower right hand corner, that looks like a computer monitor. The NetBackup Server window will come up.

Next you will click on the “Set DVD/RAID/TAPE Backup Media” button.

The screenshot displays the NetBackup Server interface. At the top, there is a toolbar with several icons, including a computer monitor icon. Below the toolbar, a table shows backup history for 'LocalServer' with columns for 'VoiceMaster', 'Backup Date', and 'Backup Time'. A tooltip for the computer monitor icon reads 'Set DVD/RAID/TAPE Backup Media'. The main area features a 3D pie chart for 'Removable Disk V:' showing 100.0% used space. Below the chart are two graphs: a line graph for 'Free Space of Disk (GB)' over 'Time' and a bar graph for 'Free Space of Disk (%)' for 'Today'. The bottom section contains a 'Log History' table with columns for 'Time' and 'Content', and a table for 'Current N/B', 'Last N/B', and 'FTP Service' with columns for 'VoiceMaster', 'Rec Date', 'Rec Time [Ch]', 'File Size', 'Trans Size', and 'TR [%]'. The status bar at the bottom shows 'Normal 0', 'Emergency 0', 'Network Bandwidth 0 KB', 'Date 2005/10/21', and 'Time 06:56:25 PM'.

VoiceMaster	Backup Date	Backup Time [Ch]
LocalServer	2006/01/11	07:40:00

Removable Disk V:

100.0%

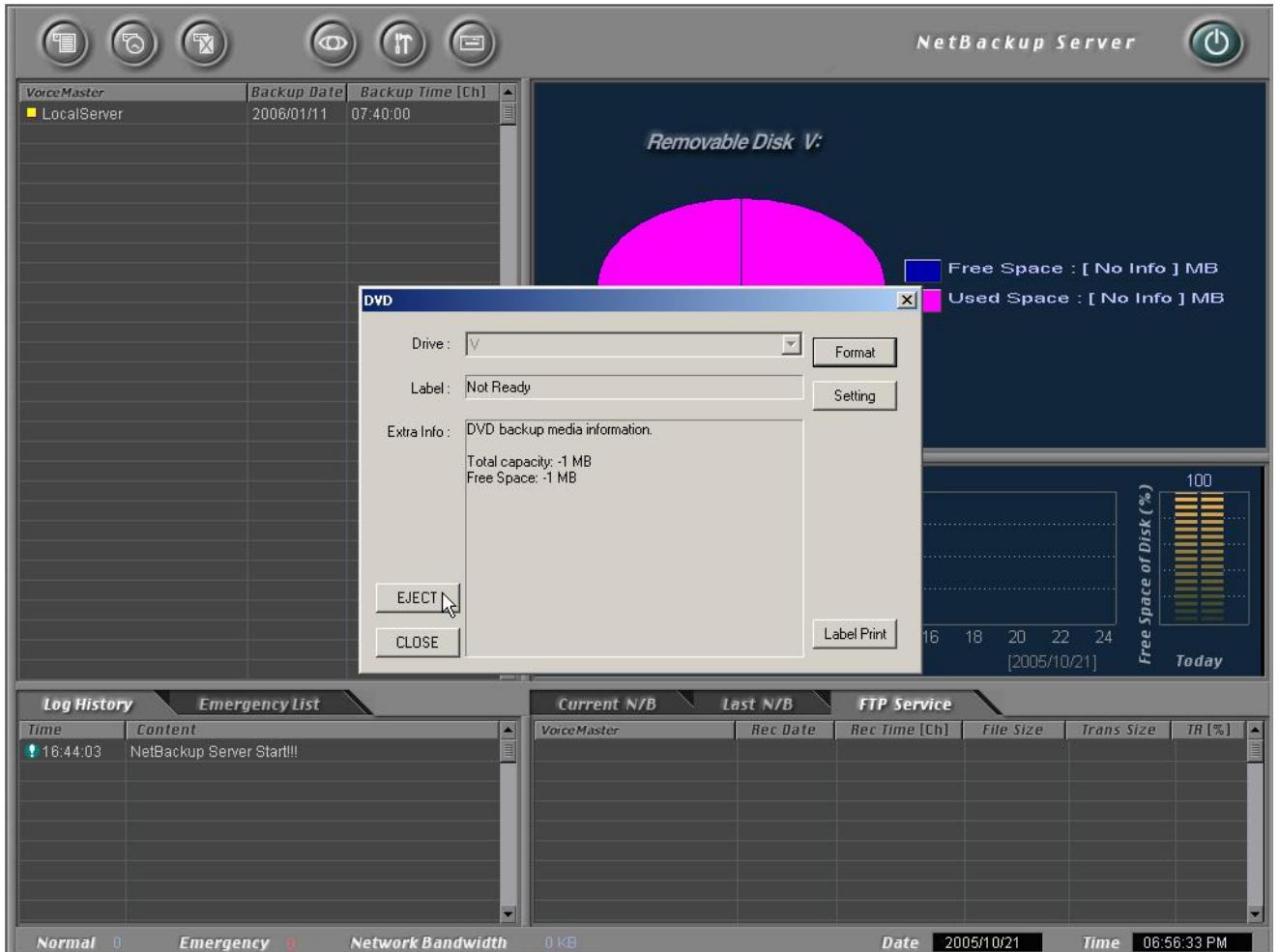
Free Space : [No Info] MB
Used Space : [No Info] MB

Time	Content
16:44:03	NetBackup Server Start!!!

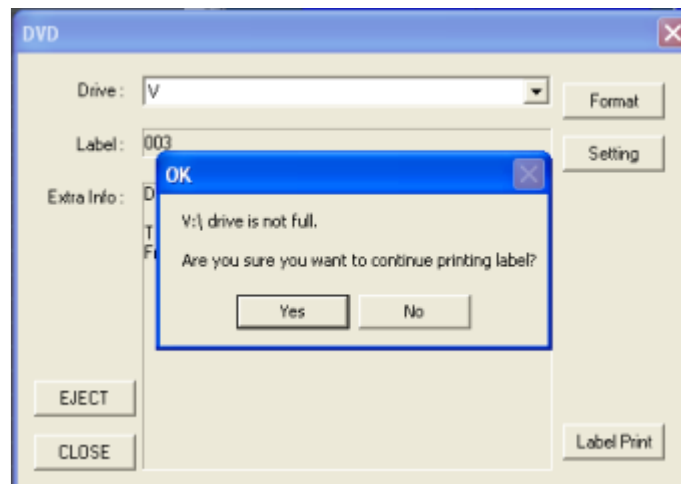
VoiceMaster	Rec Date	Rec Time [Ch]	File Size	Trans Size	TR [%]
-------------	----------	---------------	-----------	------------	--------

Normal 0 Emergency 0 Network Bandwidth 0 KB Date 2005/10/21 Time 06:56:25 PM

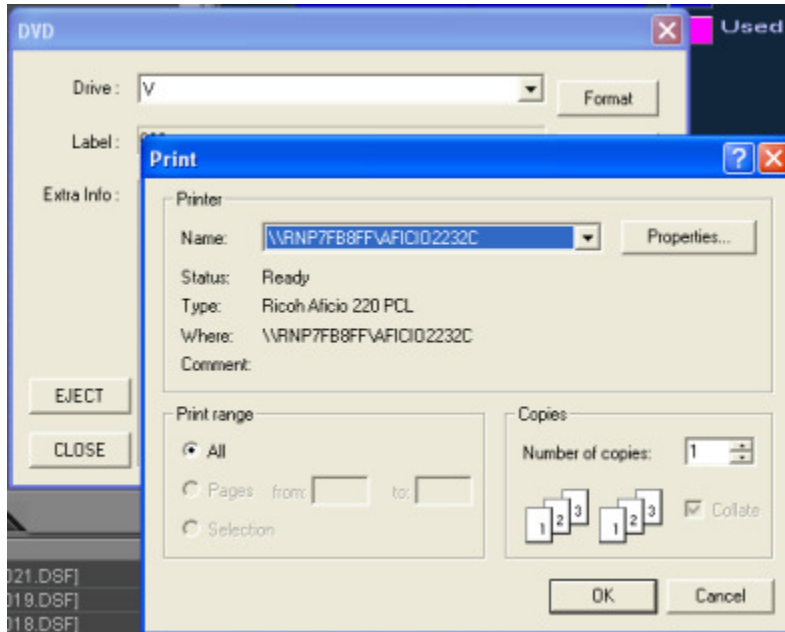
The “DVD” window will come up.



You will notice that this window has a “Label Print” button down in the right hand corner. When you click on this button another window pops up asking you if you want to continue even though the disk is not full. Hit “Yes” to continue.



The next window that comes up is the standard “Choose the printer you want to use window”. This is also where you can go into the properties to set up your print job.



In this example we are using a networked printer but you can use a local printer as well. REVCORD does not provide a printer but any label printer will work as long as the drivers are loaded on the system. Once you have configured your printer click OK to print your label.

The volume label of the disk is what will print out along with the “From” and “To” date and time.

The disk we are using has a volume label of 003 so it will read like this:

003
From: 2007/08/29 09:54:38
To : 2007/08/29 10:48:52

The printer can either use a standard DB9 connector or a USB.