

2.4 GHz MegaSphere

Model Number:
IG2450

Omnidirectional In-Building Antenna

Specifications:

- Excellent choice for open-air installation (manufacturing floor, shipping/receiving, warehouse, etc.)
- High gain omni antenna in a cylindrical form factor

Element Type	Linear Array
Frequency Range	2.4 – 2.5 GHz
Peak Gain	6 dBi
Polarization	Vertical
Impedance	50 ohms
Maximum Input Power	50 watts
VSWR (Min. Performance)	< 2.0:1
Dimensions	27.6 x 2.7 cm
Housing	PVC
Operating/Storage Temperature	-40° to +70°C



Mounting:

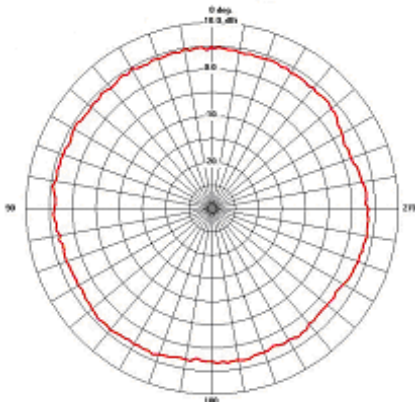
- Includes beam-clip and ceiling grid clip

Cables & Connectors:

Model #	Reference #	Plenum Rated Coax	Connector
IG2450-NF12	CAF94520	12" RG-142	N-Female
IG2450-NF36	CAF94512	36" RG-142	N-Female
IG2450-NM36	CAF94553	36" RG-142	N-Male
IG2450-RB12	CAF94521	12" RG-142	RP-BNC
IG2450-RB36	CAF94514	36" RG-142	RP-BNC
IG2450-RS36	CAF94722	36" RG-142	RP-SMA
IG2450-RT36	CAF94492	36" RG-142	RP-TNC
IG2450-SM36	CAF94513	36" RG-142	SMA Male

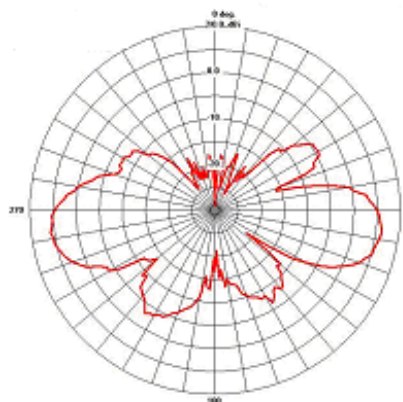


Pattern data files for LANPlanner are available at www.centurion.com or www.wirelessvalley.com.



Azimuth Plane

Cut perpendicular to the antenna and perpendicular to the cable



Elevation Plane

Cut perpendicular to the antenna along the cable axis

Indoor Mounting Kit



Specifications subject to change without notice.

IG2450a – 9/17/04