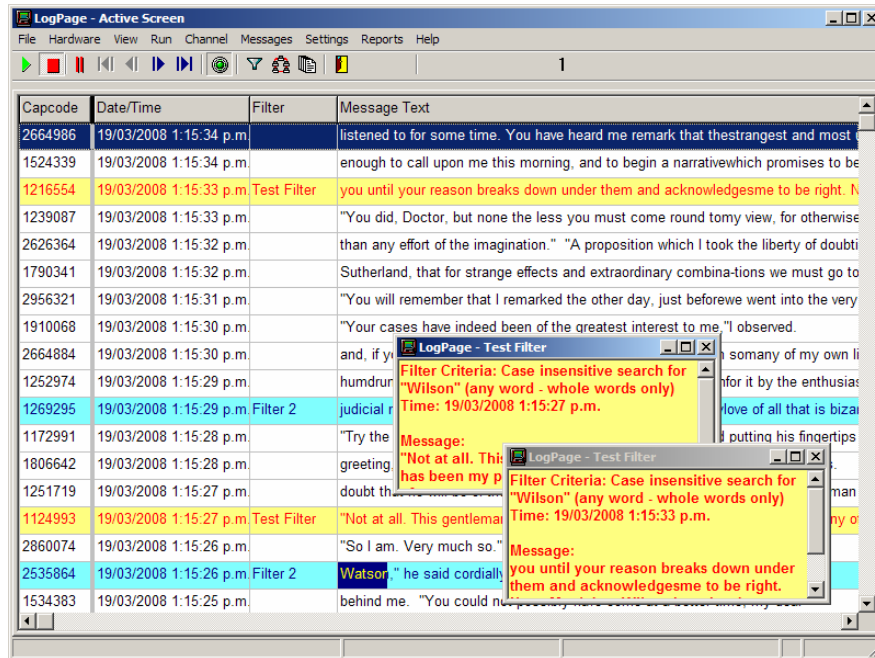


LogPage

Pager Message Logging Software



General Description

LogPage is a Windows based application used to log pager message traffic over a Pocsag or Flex paging network directly to a PC or computer network. It is available in single user or networked client/server versions.

To monitor a single paging channel LogPage requires either a PDT2000 Paging Data Terminal or a PDR2000 Paging Data Receiver. For multi-channel monitoring use Interceptor, 4 channel decoder and software.

With powerful filtering and reporting tools that automatically search through received page messages, LogPage is able to output the

filtered results to the screen, resend them to a pager or mobile phone or forward them to an email address.

The "repaging" facility allows automatic message generation allowing dispatch personnel to concentrate on other events.

The filters incorporate a range of criteria against which each message received is compared, including capcodes and text. An unlimited number of filters may be configured with each triggering different types of output.

A watchdog alarm facility allows check messages to be monitored and alerts generated if these are not received within the preconfigured time.

Applications

Message Logging to PC
Paging Network Monitoring

Message Transmission Verification
Permanent Message Record

Emergency Message Traffic Redirection
"Closing The Loop"

Features

Text Filters
RePaging to pager or SMS/Text or email
No limits on capcode capacity
Standard Database Structure
Standalone and networked versions available
Text Filters

Capcode Filters
Alerts to pager, SMS, Email
Unlimited Filters
Total control over look and feel
Network watchdog facility
Capcode Filters

System Requirements

PC (Pentium 4+ recommended) with serial com port, running Windows 2000/XP

"I love LogPage, it has enabled me to set up a large number of filters to automate tasks that operators in our dispatch centre had to remember, and frequently didn't, in the past" Tad Coyner, Communications Manager, Sedona Fire Department